

# AN INTRODUCTION TO HIV/AIDS

## FOURTH GRADE



# NON-COMMUNICABLE DISEASES

---

- Do **not** spread from person to person.
- Can develop from the environment, heredity, or genetics.
- Can affect any system of the body, such as respiratory, gastrointestinal, circulatory.

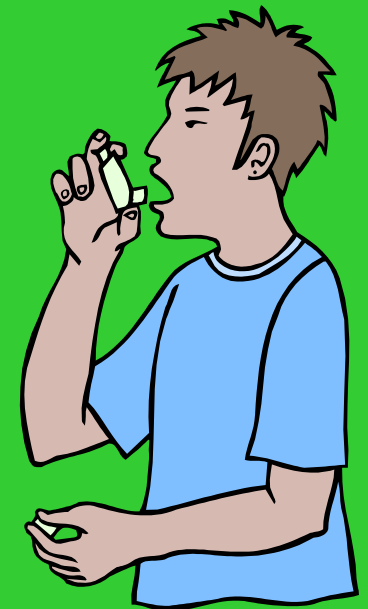
# NON-COMMUNICABLE DISEASES

---

- ☞ Sometimes can be cured or even prevented through medication, therapy, and/or understanding.
- ☞ Sometimes cannot be cured but controlled through same measures.

# EXAMPLES OF NON-COMMUNICABLE DISEASES

- 📄 Asthma
- 📄 Allergies
- 📄 Diabetes
- 📄 Headache
- 📄 Cancer
- 📄 Heart Disease



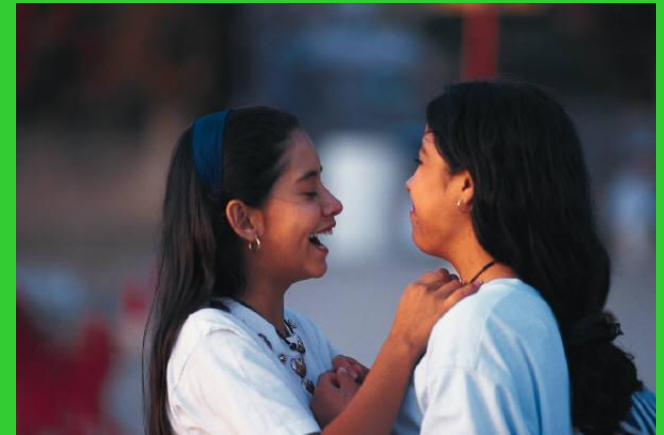
# COMMUNICABLE DISEASES

---

- ☞ Can spread from person to person, which means they are contagious.
- ☞ Are caused by germs such as viruses or bacteria.
- ☞ Spreads through direct contact - touching a sick person, or indirect contact - touching objects that a sick person has touched.
- ☞ Can enter the body through the nose, eyes, or a break in the skin, or from hands to mouth.

# EXAMPLES OF COMMUNICABLE DISEASES

- 📄 Colds and Flu
- 📄 Chicken Pox
- 📄 Hepatitis
- 📄 Pink Eye
- 📄 Fifth's Disease
- 📄 HIV/AIDS



# WHAT IS HIV/AIDS?

---

📄 HIV stands for Human Immunodeficiency Virus.

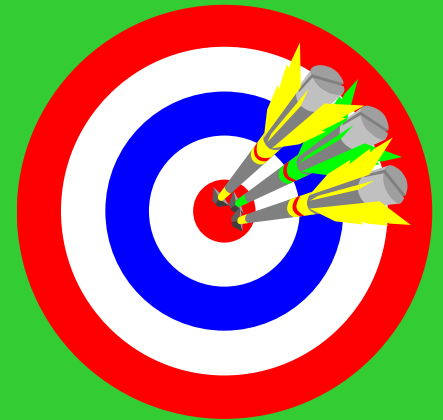
📄 AIDS stands for Acquired Immune Deficiency Syndrome.

📄 AIDS is the result of a long process that begins with the HIV virus.

📄 HIV/AIDS is FATAL! There is no cure!


# HOW HIV AFFECTS YOUR BODY

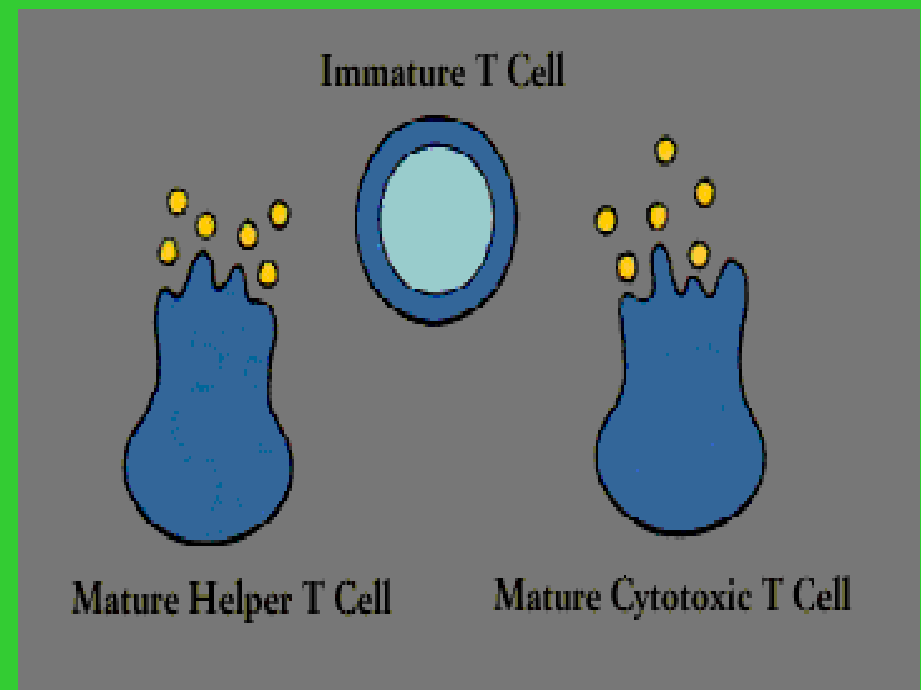
- 📄 The HIV virus gets introduced into your body through blood to blood contact, through a break in the skin.
- 📄 It attaches itself to the T-Helper cells in your immune system and begins to reproduce itself.
- 📄 As the virus spreads, more and more T-Helper cells are destroyed causing your immune system to become weaker and weaker.





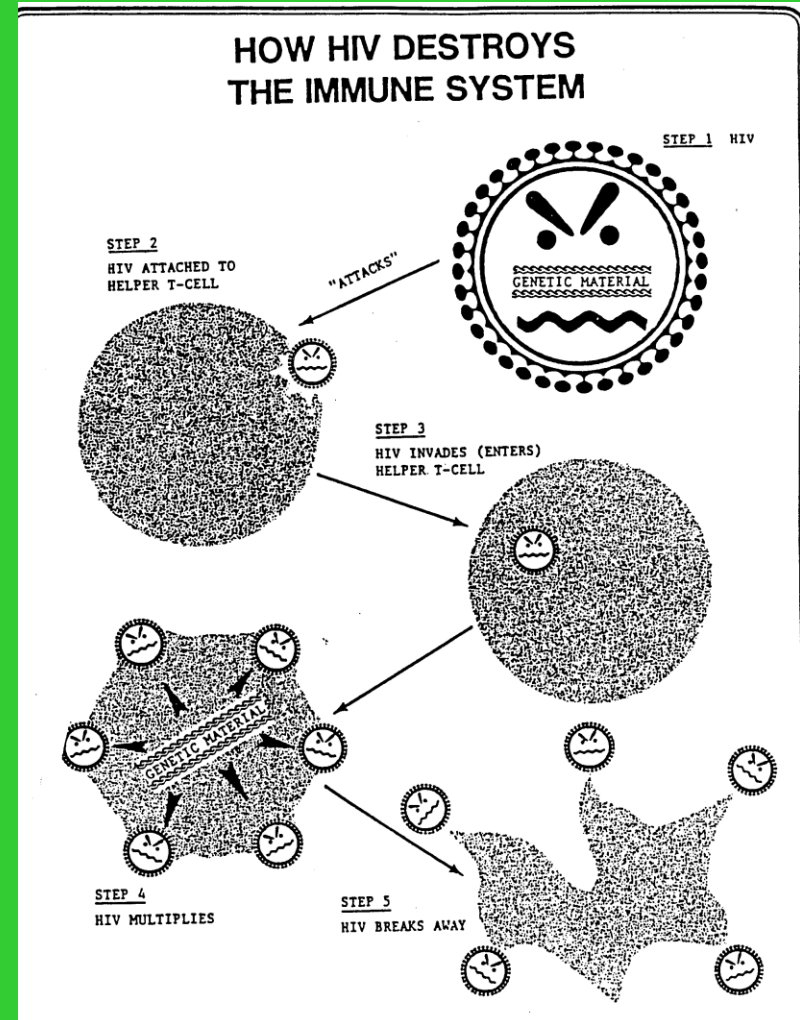
# WHAT ARE T-HELPER CELLS?

 A type of white blood cells (immune cells) that are triggered by antibodies, in the blood, to seek and attack invading organisms at the site of infection.



# WHAT THE DISEASE DOES TO YOUR BODY

- As the virus spreads, more and more T-Helper cells are destroyed, and your immune system becomes weaker and weaker.
- Over time your body doesn't have enough white cell to fight off infection.
- The body can then be attacked by all kinds of infections and diseases (called opportunistic diseases).
- This is AIDS.





# WAY TO SPREAD HIV/AIDS

Coming in contact with fresh blood or body fluids

I. V. Drug Use - sharing needles

Mother to Unborn Child

Blood Brothers

Sharing toothbrushes, razors, or dental floss

Tattoos, or body piercing



# HOW HIV IS NOT SPREAD



- 📄 Doorknobs
- 📄 Drinking fountains
- 📄 Toilet seats
- 📄 Eating utensils
- 📄 Insect bites
- 📄 Hugging
- 📄 Coughing, sneezing
- 📄 Holding hands

# WHAT SHOULD YOU DO?

- 📄 Learn accurate information about the disease
- 📄 Take responsibility for your own protection
- 📄 Refuse to use drugs
- 📄 Respect yourself

